

CS370 (G518)

PARTS CATALOG

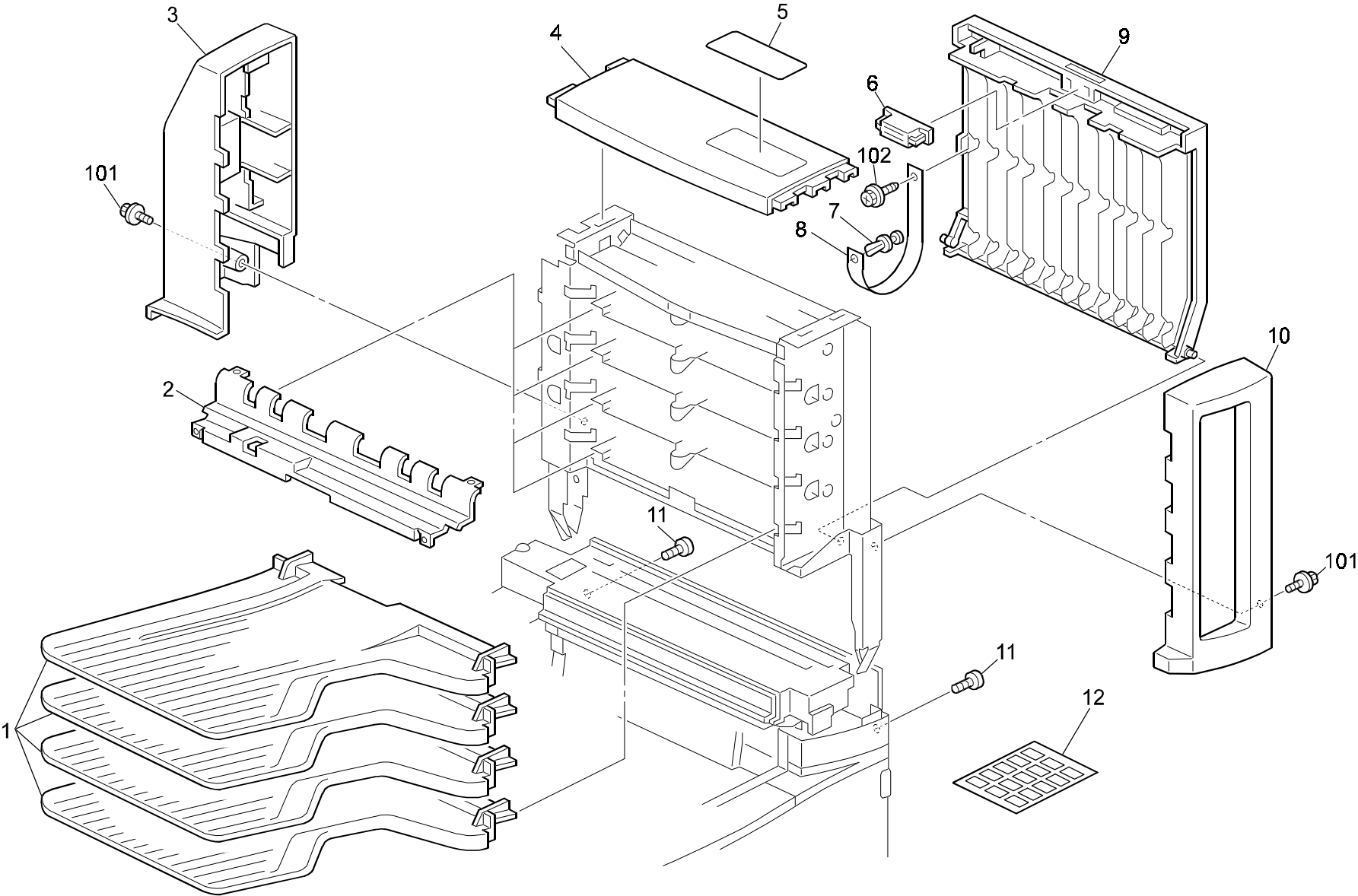
INTRODUCTION

This chapter instructs you the numbers and names of parts on this machine.

INDEX to PARTS CATALOG

1.EXTERIOR (G518).....	2
2.TRANSPORT SECTION 1 (G518)	4
3.TRANSPORT SECTION 2 (G518)	6
4.TRANSPORT SECTION 3 (G518)	8
PARTS INDEX	11

1.EXTERIOR (G518)

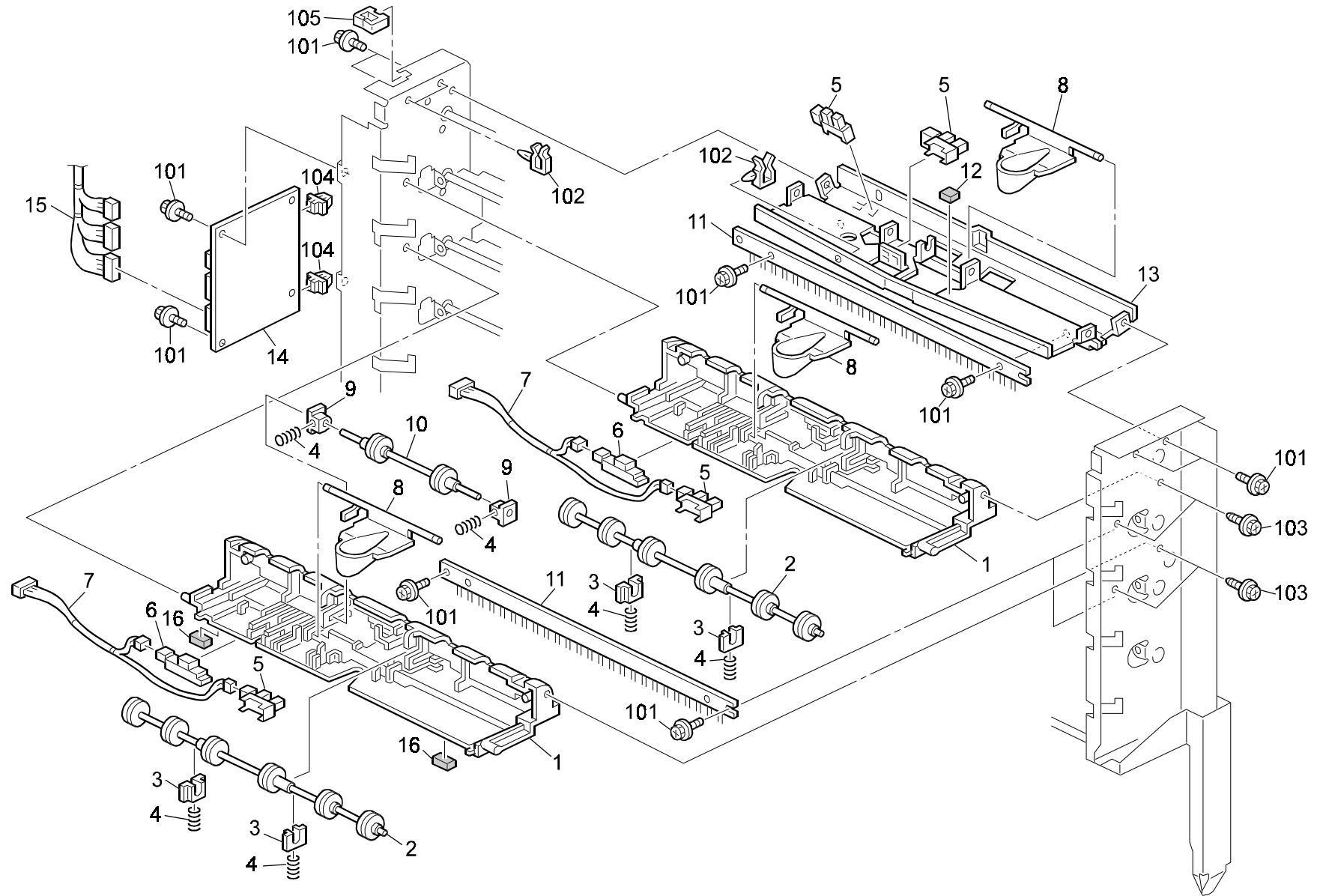


1.EXTERIOR (G518)

Index No.	Part No.	Description	Q'ty Per Assembly
1	G518 6611	Copy Tray	4
2	G518 2282	Sensor Cover - Surface	4
3	G518 1611	Rear Cover	1
4	G518 1711	Upper Cover	1
5	G518 1752	Decal - Misfeed Removal	1
6	AG07 1010	Magnet Catch	1
7	A048 2838	Nylon Rivet	1
8	G518 2371	Cover Band	1
9	G518 2315	Jam Removal Cover	1
10	G518 1511	Front Cover	1
11	G518 6641	Flat Screw - Groove Type	2
12	G696 2410	Decal - Bin Display	1

Index No.	Part No.	Description	Q'ty Per Assembly
101	0451 3008H	Tapping Screw - 3x8	
102	0450 3008B	Tapping Screw - M3x8	

2.TRANSPORT SECTION 1 (G518)

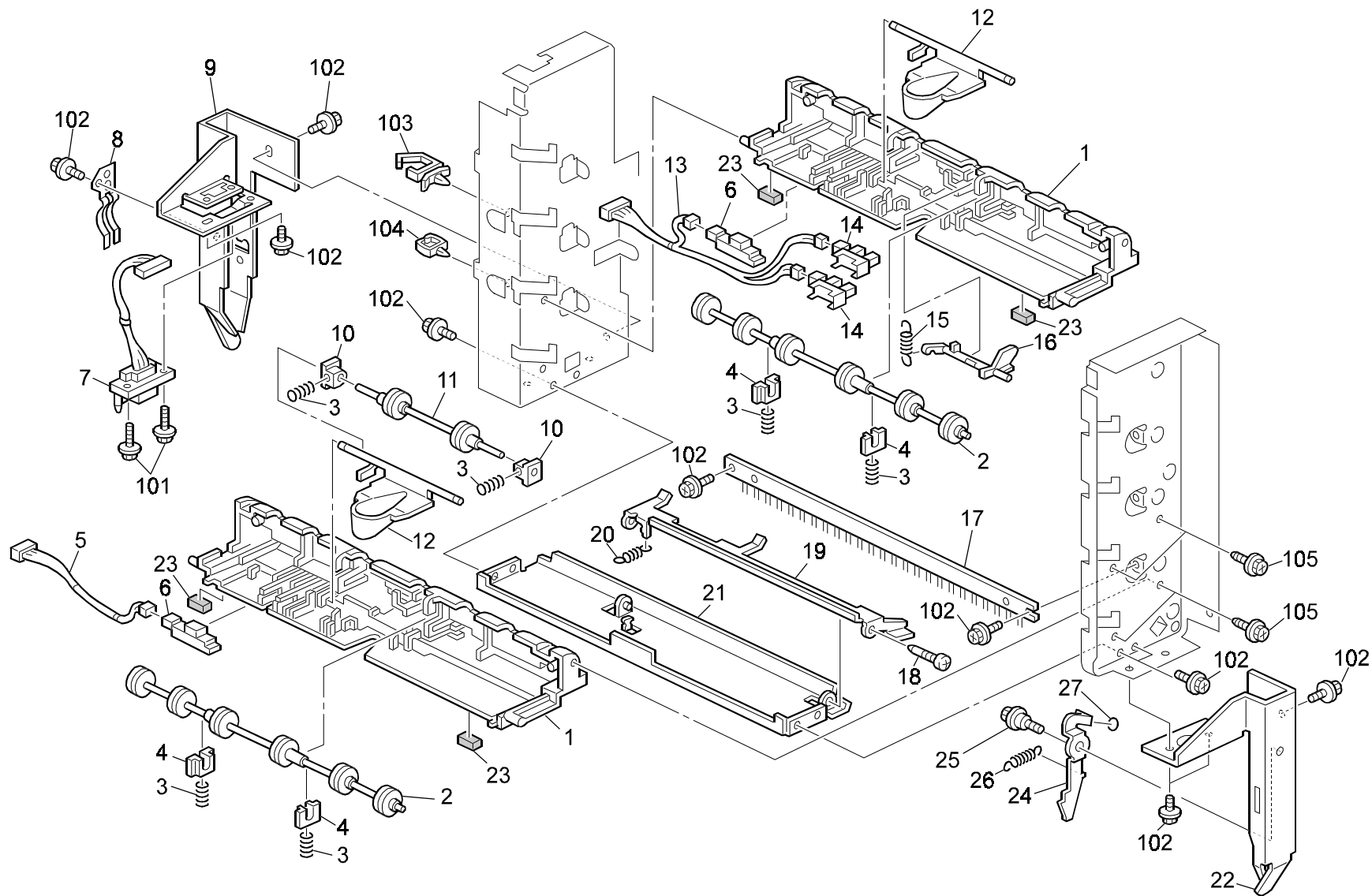


2.TRANSPORT SECTION 1 (G518)

Index No.	Part No.	Description	Q'ty Per Assembly
1	G518 2212	Guide Plate	2
2	AF02 2113	Driven Roller - 23MM	2
3	AA08 0034	Bushing - 4x5x7	4
4	AA06 3337	Compression Spring	4
5	AW02 0086	Photointerruptor	4
6	AW01 0088	Sensor Gp2a200lcs - Assembly	2
7	G518 5210	Paper Sensor Harness	2
8	G518 2262	Paper Sensor Actuator - Surface	2
9	AA08 0232	Bushing - M4	1
10	AF02 2075	Driven Roller	1
11	AA12 0095	Discharge Brush	2
12	G518 1235	Silencer Cushion	1
13	G518 1231	Upper Stay	1
14	G518 5100	Main Control Board	1
15	G518 5200	Main Harness	1
16	G518 2291	Guide Plate Cushion	2

Index No.	Part No.	Description	Q'ty Per Assembly
101	0451 3006B	Tapping Screw - M3x6	
102	1105 0283	Clamp	
103	0450 3008B	Tapping Screw - M3x8	
104	1105 0326	Locking Support	
105	1105 0328	Harness Clamp - ES-0505	

3.TRANSPORT SECTION 2 (G518)

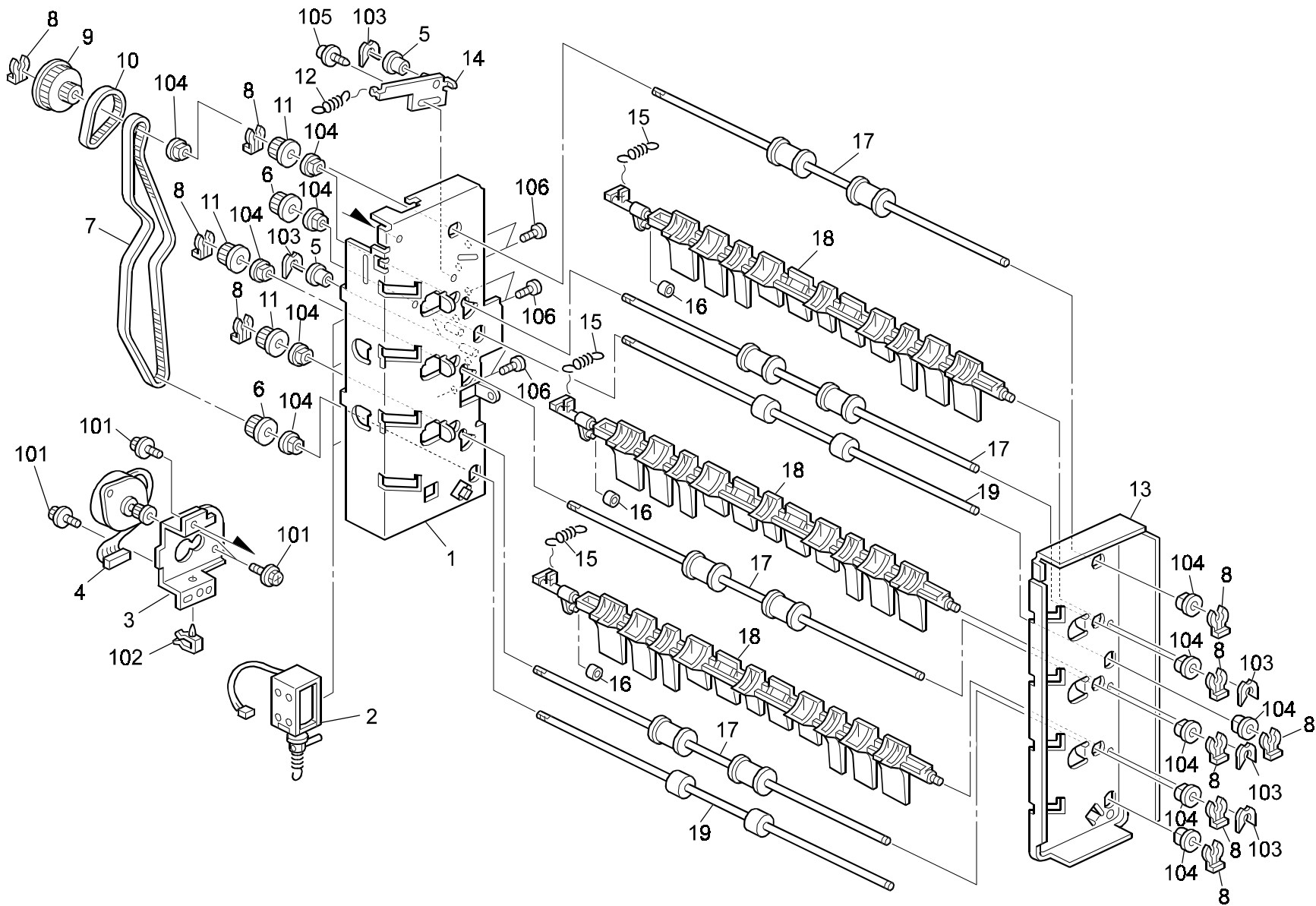


3.TRANSPORT SECTION 2 (G518)

Index No.	Part No.	Description	Q'ty Per Assembly
1	G518 2212	Guide Plate	2
2	AF02 2113	Driven Roller - 23MM	2
3	AA06 3337	Compression Spring	6
4	AA08 0034	Bushing - 4x5x7	4
5	G518 5230	Bin Sensor Harness	1
6	AW01 0088	Sensor Gp2a200lcs - Assembly	2
7	G518 5220	Interface Harness	1
8	G518 1226	Ground Plate	1
9	G518 1225	Rear Bracket - Coupling	1
10	AA08 0232	Bushing - M4	2
11	AF02 2075	Driven Roller	1
12	G518 2262	Paper Sensor Actuator - Surface	2
13	G518 5250	Paper Sensor Harness	1
14	AW02 0086	Photointerruptor	2
15	AA06 0801	Tension Spring	1
16	G518 2272	Transport Actuator	1
17	AA12 0095	Discharge Brush	1
18	5446 2824	Screw - DUPLEX GUIDE PLATE	1
19	G518 1245	Release Lever	1
20	AA06 0800	Pressure Release Spring - 0.5N	1
21	G518 1241	Lower Stay	1
22	G518 1215	Front Bracket - Coupling	1
23	G518 2291	Guide Plate Cushion	4
24	G518 1216	Coupling Arm - Front	1
25	A697 1125	Stepped Screw - Lever	1
26	AA06 0803	Tension Spring	1
27	G518 1217	Seal - 3mm	1

Index No.	Part No.	Description	Q'ty Per Assembly
101	0451 3010B	Tapping Screw - M3x10	
102	0451 3006B	Tapping Screw - M3x6	
103	1105 0310	Harness Clamp - LWS-1S	
104	1105 0229	Clamp	
105	0450 3008B	Tapping Screw - M3x8	

4.TRANSPORT SECTION 3 (G518)



4.TRANSPORT SECTION 3 (G518)

Index No.	Part No.	Description	Q'ty Per Assembly
1	G518 1220	Rear Side Plate	1
2	G518 2710	DC Solenoid - Paper Exit	1
3	G518 2512	Motor Bracket	1
4	AX04 0116	Stepper Motor - DC24V	1
5	A079 4914	Idle Roller - Gate Belt	2
6	AB03 0639	Timing Pulley - T26 S2M	2
7	AA04 3532	Timing Belt - B40S2M560	1
8	5447 2681	Snap Ring	10
9	AB03 0638	Timing Pulley - T57/T28 S2M	1
10	AA04 3531	Timing Belt - B40S2M144	1
11	GB03 0032	Timing Pulley - T28-S2M	3
12	AA06 0803	Tension Spring	1
13	G518 1212	Front Side Plate	1
14	G518 2555	Tightener Bracket	1
15	AA06 0802	Tension Spring	3
16	A458 2251	Cushion - Bin Solenoid Lever	3
17	AF02 0478	Exit Roller	4
18	G518 2412	Polarization Powel	3
19	AF02 0477	Transport Roller	2



Index No.	Part No.	Description	Q'ty Per Assembly
101	0451 3006B	Tapping Screw - M3x6	
102	1105 0283	Clamp	
103	0805 0089	Retaining Ring - M4	
104	0805 3480	Bushing - 6mm	
105	0951 4006W	Philips Screw With Flat Washer - M4x6	
106	0313 0030B	Philips Pan Head Screw - M3x3	

PARTS INDEX

Part No.	Description	Page and Index No.
G518 1212	Front Side Plate	9- 13
G518 1215	Front Bracket - Coupling	7- 22
G518 1216	Coupling Arm - Front	7- 24
G518 1217	Seal - 3mm	7- 27
G518 1220	Rear Side Plate	9- 1
G518 1225	Rear Bracket - Coupling	7- 9
G518 1226	Ground Plate	7- 8
G518 1231	Upper Stay	5- 13
G518 1235	Silencer Cushion	5- 12
G518 1241	Lower Stay	7- 21
G518 1245	Release Lever	7- 19
G518 1511	Front Cover	3- 10
G518 1611	Rear Cover	3- 3
G518 1711	Upper Cover	3- 4
G518 1752	Decal - Misfeed Removal	3- 5
G518 2212	Guide Plate	5- 1
G518 2212	Guide Plate	7- 1
G518 2262	Paper Sensor Actuator - Surface	5- 8
G518 2262	Paper Sensor Actuator - Surface	7- 12
G518 2272	Transport Actuator	7- 16
G518 2282	Sensor Cover - Surface	3- 2
G518 2291	Guide Plate Cushion	7- 23
G518 2291	Guide Plate Cushion	5- 16
G518 2315	Jam Removal Cover	3- 9
G518 2371	Cover Band	3- 8
G518 2412	Polarization Powel	9- 18
G518 2512	Motor Bracket	9- 3
G518 2555	Tightener Bracket	9- 14
G518 2710	DC Solenoid - Paper Exit	9- 2
G518 5100	Main Control Board	5- 14
G518 5200	Main Harness	5- 15
G518 5210	Paper Sensor Harness	5- 7
G518 5220	Interface Harness	7- 7
G518 5230	Bin Sensor Harness	7- 5
G518 5250	Paper Sensor Harness	7- 13

Part No.	Description	Page and Index No
G518 6611	Copy Tray	3- 1
G518 6641	Flat Screw - Groove Type	3- 11

Part No.	Description	Page and Index No.
AA04 3531	Timing Belt - B40S2M144	9- 10
AA04 3532	Timing Belt - B40S2M560	9- 7
AA06 0800	Pressure Release Spring - 0.5N	7- 20
AA06 0801	Tension Spring	7- 15
AA06 0802	Tension Spring	9- 15
AA06 0803	Tension Spring	7- 26
AA06 0803	Tension Spring	9- 12
AA06 3337	Compression Spring	7- 3
AA06 3337	Compression Spring	5- 4
AA08 0034	Bushing - 4x5x7	5- 3
AA08 0034	Bushing - 4x5x7	7- 4
AA08 0232	Bushing - M4	7- 10
AA08 0232	Bushing - M4	5- 9
AA12 0095	Discharge Brush	5- 11
AA12 0095	Discharge Brush	7- 17
AB03 0638	Timing Pulley - T57/T28 S2M	9- 9
AB03 0639	Timing Pulley - T26 S2M	9- 6
AF02 0477	Transport Roller	9- 19
AF02 0478	Exit Roller	9- 17
AF02 2075	Driven Roller	7- 11
AF02 2075	Driven Roller	5- 10
AF02 2113	Driven Roller - 23MM	7- 2
AF02 2113	Driven Roller - 23MM	5- 2
AG07 1010	Magnet Catch	3- 6
AW01 0088	Sensor Gp2a200lcs - Assembly	7- 6
AW01 0088	Sensor Gp2a200lcs - Assembly	5- 6
AW02 0086	Photointerruptor	5- 5
AW02 0086	Photointerruptor	7- 14
AX04 0116	Stepper Motor - DC24V	9- 4
G518 1212	Front Side Plate	9- 13
G518 1215	Front Bracket - Coupling	7- 22
G518 1216	Coupling Arm - Front	7- 24
G518 1217	Seal - 3mm	7- 27
G518 1220	Rear Side Plate	9- 1
G518 1225	Rear Bracket - Coupling	7- 9

Part No.	Description	Page and Index No.
G518 1226	Ground Plate	7- 8
G518 1231	Upper Stay	5- 13
G518 1235	Silencer Cushion	5- 12
G518 1241	Lower Stay	7- 21
G518 1245	Release Lever	7- 19
G518 1511	Front Cover	3- 10
G518 1611	Rear Cover	3- 3
G518 1711	Upper Cover	3- 4
G518 1752	Decal - Misfeed Removal	3- 5
G518 2212	Guide Plate	5- 1
G518 2212	Guide Plate	7- 1
G518 2262	Paper Sensor Actuator - Surface	7- 12
G518 2262	Paper Sensor Actuator - Surface	5- 8
G518 2272	Transport Actuator	7- 16
G518 2282	Sensor Cover - Surface	3- 2
G518 2291	Guide Plate Cushion	5- 16
G518 2291	Guide Plate Cushion	7- 23
G518 2315	Jam Removal Cover	3- 9
G518 2371	Cover Band	3- 8
G518 2412	Polarization Powel	9- 18
G518 2512	Motor Bracket	9- 3
G518 2555	Tightener Bracket	9- 14
G518 2710	DC Solenoid - Paper Exit	9- 2
G518 5100	Main Control Board	5- 14
G518 5200	Main Harness	5- 15
G518 5210	Paper Sensor Harness	5- 7
G518 5220	Interface Harness	7- 7
G518 5230	Bin Sensor Harness	7- 5
G518 5250	Paper Sensor Harness	7- 13
G518 6611	Copy Tray	3- 1
G518 6641	Flat Screw - Groove Type	3- 11
G696 2410	Decal - Bin Display	3- 12
GB03 0032	Timing Pulley - T28-S2M	9- 11

Part No.	Description	Page and Index No.
A048 2838	Nylon Rivet	3- 7
A079 4914	Idle Roller - Gate Belt	9- 5
A458 2251	Cushion - Bin Solenoid Lever	9- 16
A697 1125	Stepped Screw - Lever	7- 25

Part No.	Description	Page and Index No.
5446 2824	Screw - DUPLEX GUIDE PLATE	7- 18
5447 2681	Snap Ring	9- 8

Part No.	Description	Page and Index No.
0313 0030B	Philips Pan Head Screw - M3x3	9-106
0450 3008B	Tapping Screw - M3x8	3-102
0450 3008B	Tapping Screw - M3x8	7-105
0450 3008B	Tapping Screw - M3x8	5-103
0451 3006B	Tapping Screw - M3x6	9-101
0451 3006B	Tapping Screw - M3x6	7-102
0451 3006B	Tapping Screw - M3x6	5-101
0451 3008H	Tapping Screw - 3x8	3-101
0451 3010B	Tapping Screw - M3x10	7-101
0805 0089	Retaining Ring - M4	9-103
0805 3480	Bushing - 6mm	9-104
0951 4006W	Philips Screw With Flat Washer - M4x6	9-105
1105 0229	Clamp	7-104
1105 0283	Clamp	5-102
1105 0283	Clamp	9-102
1105 0310	Harness Clamp - LWS-1S	7-103
1105 0326	Locking Support	5-104
1105 0328	Harness Clamp - ES-0505	5-105

Part No.	Description	Page and Index No.